

Better Health. Powered by Information.

Connect Care Vlog

How is the system built?

Rob Hayward, CMIO, Alberta Health Services

April 20, 2018



How is the system built?

Scope

Structure

Workflow

Content

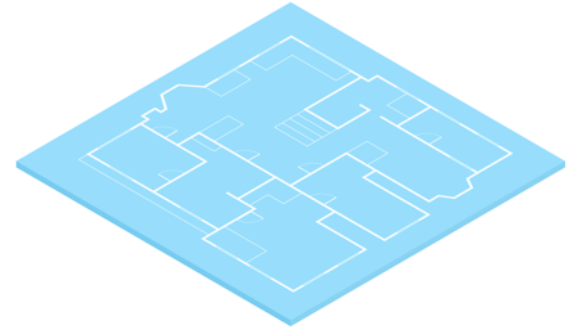


“Building” Connect Care



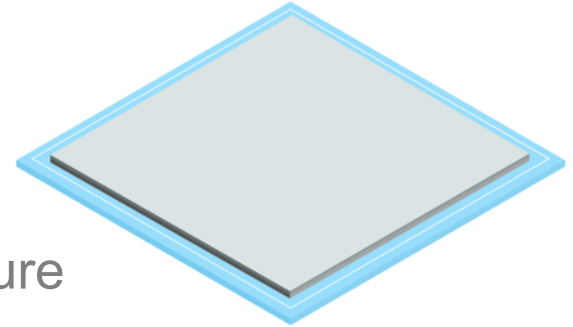
“Building” Connect Care

- **Planning** ← scope & architecture
 - Mapping purpose to program



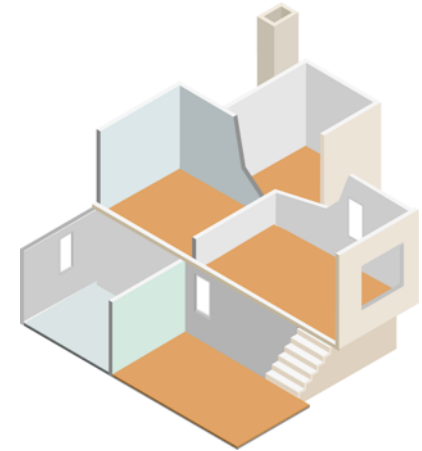
“Building” Connect Care

- **Planning** ← scope & architecture
 - Mapping purpose to program
- **Structure** ← foundation & infrastructure
 - Mapping product to program



“Building” Connect Care

- **Planning** ← scope & architecture
 - Mapping purpose to program
- **Structure** ← foundation & infrastructure
 - Mapping product to program
- **Workflow** ← layout, passages, framing, lock-up
 - Mapping product to process



“Building” Connect Care

- **Planning** ← scope & architecture
 - Mapping purpose to program
- **Structure** ← foundation & infrastructure
 - Mapping product to program
- **Workflow** ← layout, passages, framing, lock-up
 - Mapping product to process
- **Content** ← furniture, functions, decorations
 - Mapping product to purpose



“Building” Connect Care - Activities

- **Planning** ← scope & architecture
 - Scoping
- **Structure** ← foundation & infrastructure
 - Groundwork
- **Workflow** ← layout, passages, framing, lock-up
 - Direction-setting, Adoption & Validation
- **Content** ← furniture, functions, decorations
 - Clinical System Design



Staying Informed:

- Website connect-care.ca
- Resources ahs-cis.ca/mdresources
- Blog bytes.connect-care.ca
- Vlog vlog.connect-care.ca

Better Health. Powered by Information.

Connect Care Vlog

How is the system built?

Rob Hayward, CMIO, Alberta Health Services

