

Better Health. Powered by Information.

Connect Care Vlog

When does Connect Care Happen?

Rob Hayward, CMIO, Alberta Health Services

November 20, 2018



When does Connect Care Happen?

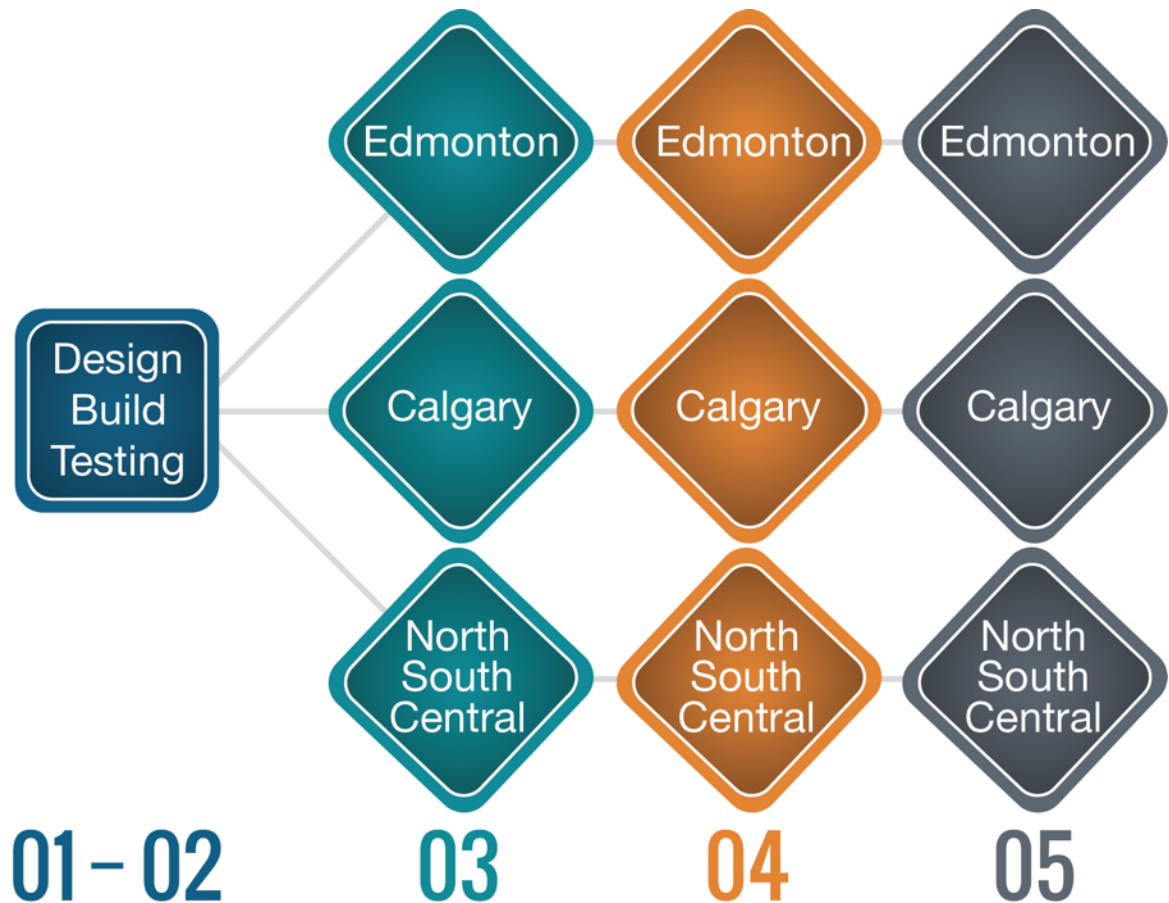
Stages

Sequences

Start-up



Connect Care Stages



Connect Care Timelines

5-year Plan



Preparation

- STQs
- CKCM
- Current State
- Scope

Design-Build-Test (2 years)

- Groundwork
- Direction-setting
- Content
- Validation
- Training
- Testing
- Readiness

Implementation (3 years)

- Rolling experience transfer
- Confront complexity at front end
- Onsite support throughout
- Nov 2019 1st large/complex site

Connect Care Design & Build

“Building” Connect Care

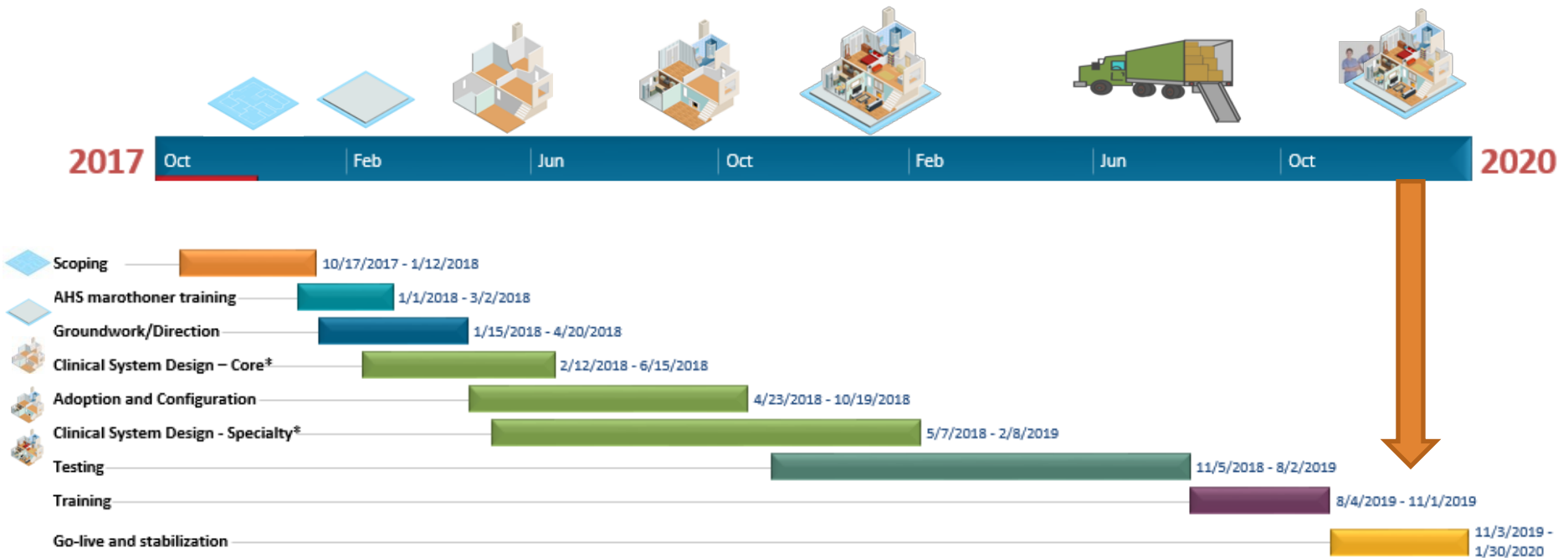


“Building” Connect Care - Activities

- **Planning** ← scope & architecture
 - Scoping
- **Structure** ← foundation & infrastructure
 - Groundwork
- **Workflow** ← layout, passages, framing, lock-up
 - Direction-setting, Adoption & Validation
- **Content** ← furniture, functions, decorations
 - Clinical System Design



Build Sequencing



When does Connect Care Happen?

Stages

Sequences

Start-up



CONNECT CARE: Timelines

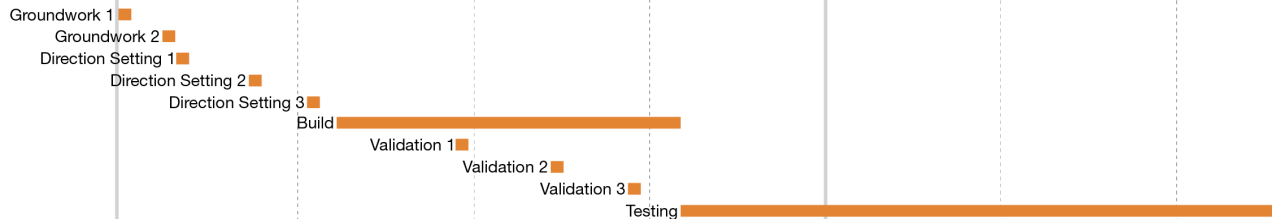


TIMELINE

2018

2019

Workflow



Clinical System Design



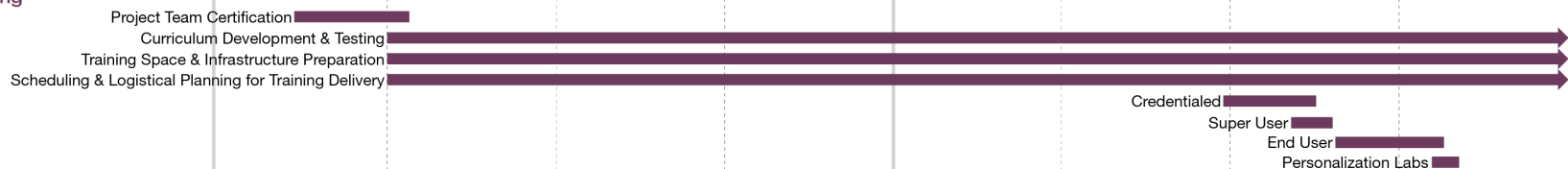
System Integration & Data Conversion



Infrastructure



Training

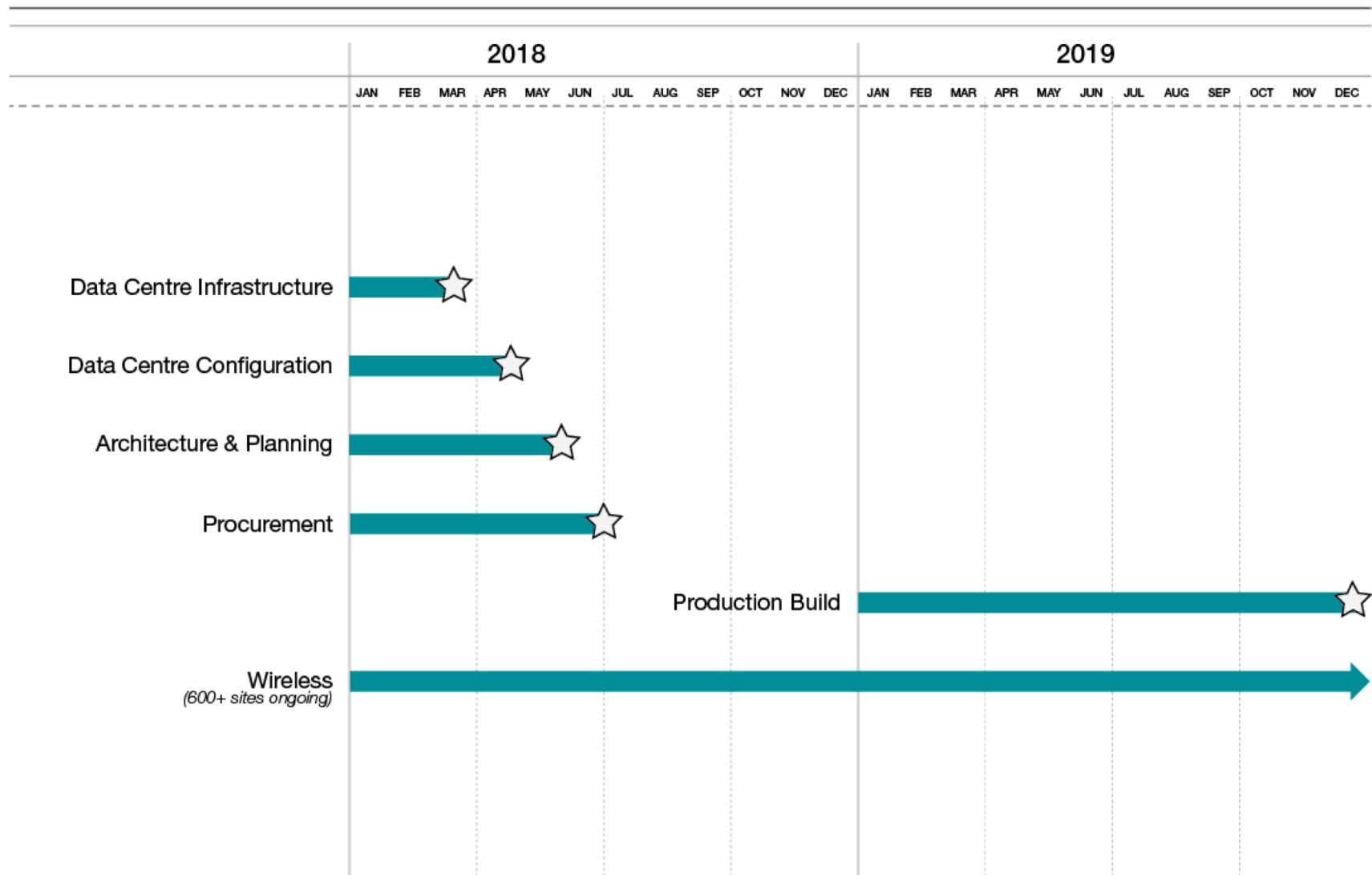


Readiness Work

Helping teams prepare for Connect Care implementation.

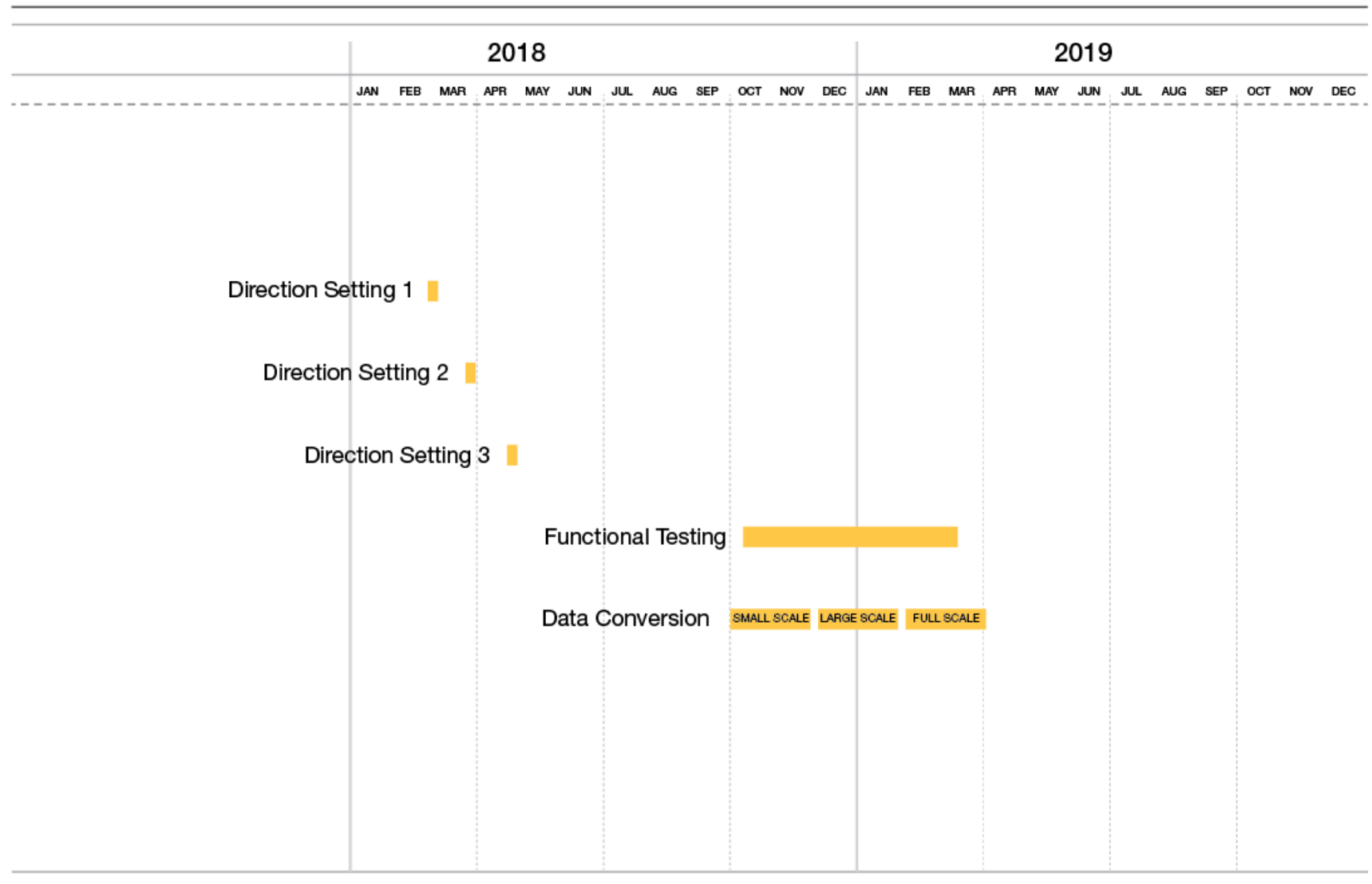
☆ Key Milestone Reached

CONNECT CARE: Infrastructure Timeline

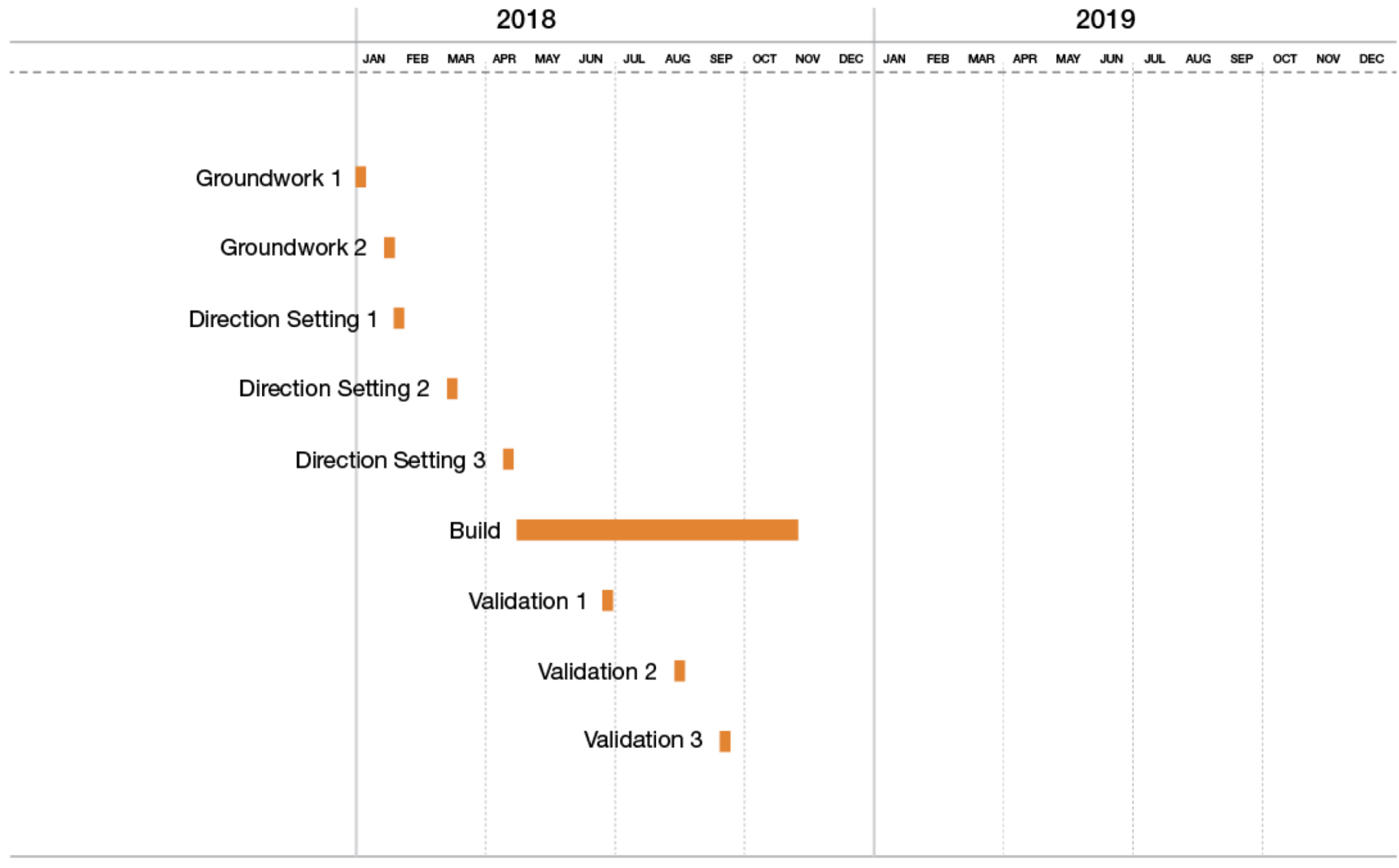


★ Key Milestone Reached

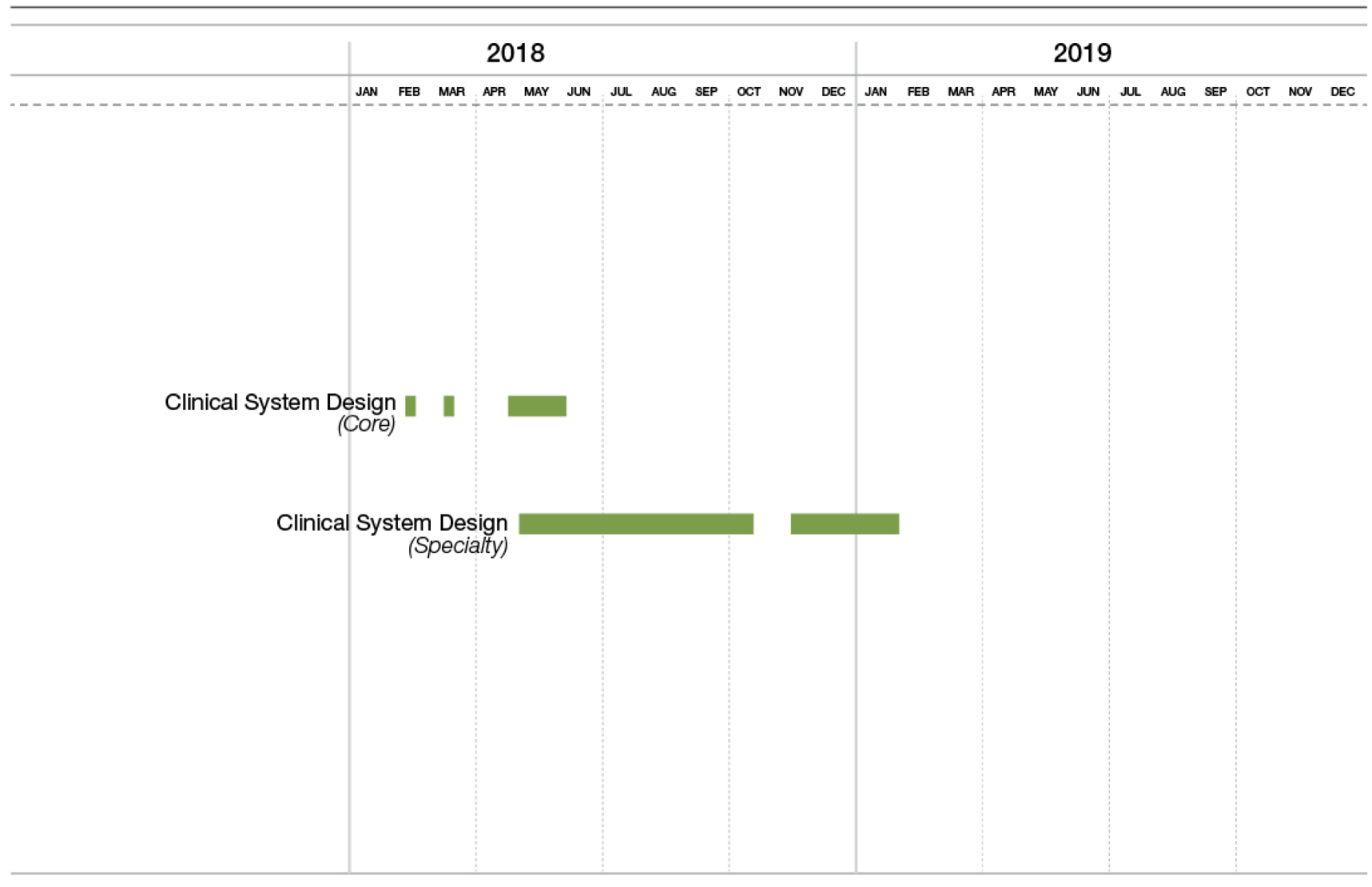
CONNECT CARE: System Integration & Data Conversion



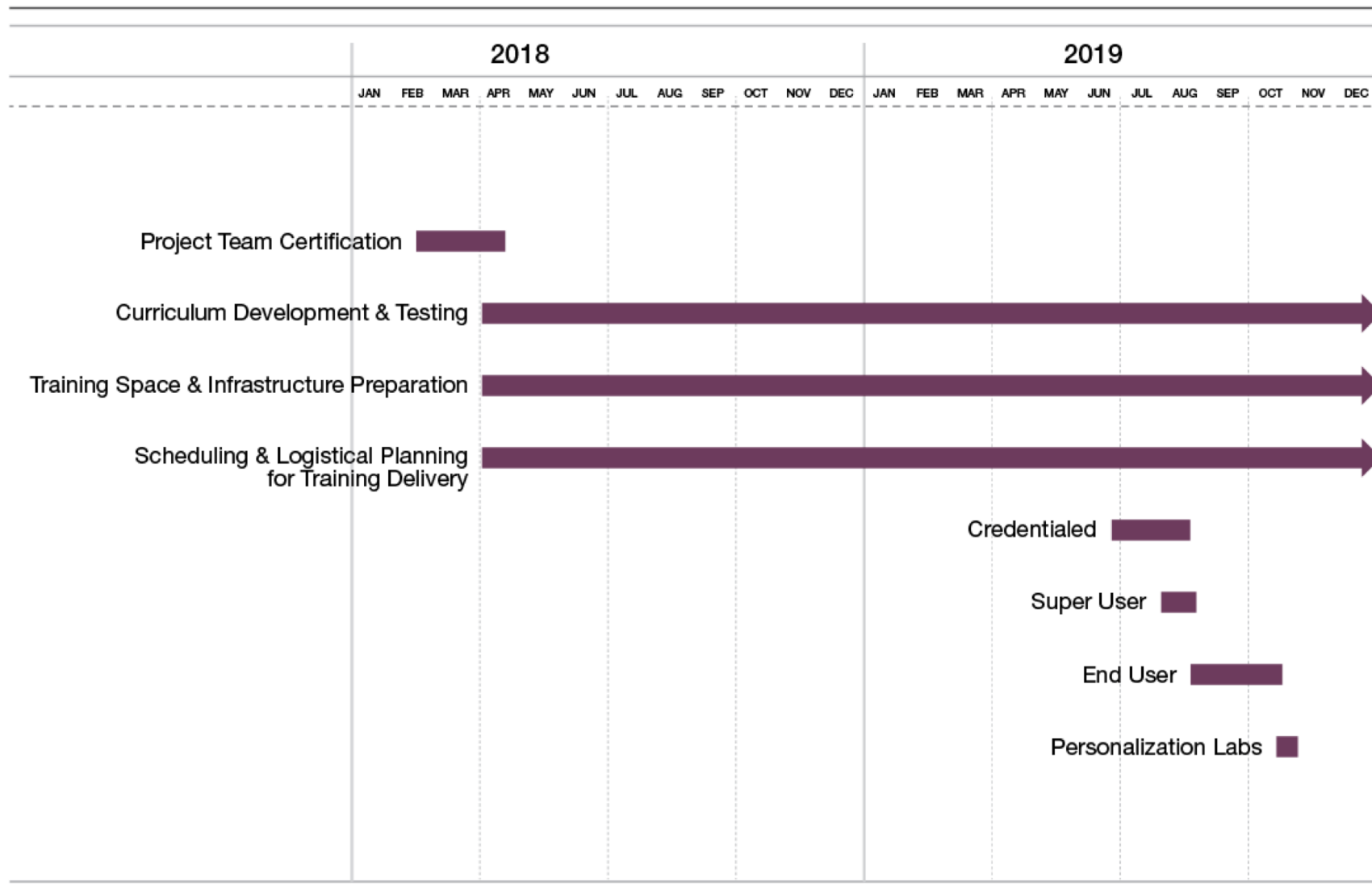
CONNECT CARE: Workflow Timeline



CONNECT CARE: Clinical System Design Timeline



CONNECT CARE: Training Timeline



When does Connect Care Happen?

Stages

Sequences

Start-up



Implementation Strategy

WAVES

After our initial deployment at a large academic site in Edmonton, we will deploy across the continuum of care, within a geography, wherever possible.



Foundation pre-Waves

Registries

- AHS integration with patient, provider, facility registries

Scheduling

- Integrated scheduling, bed management, etc.

Laboratory & Imaging

- Provincial integrated laboratory/DI information

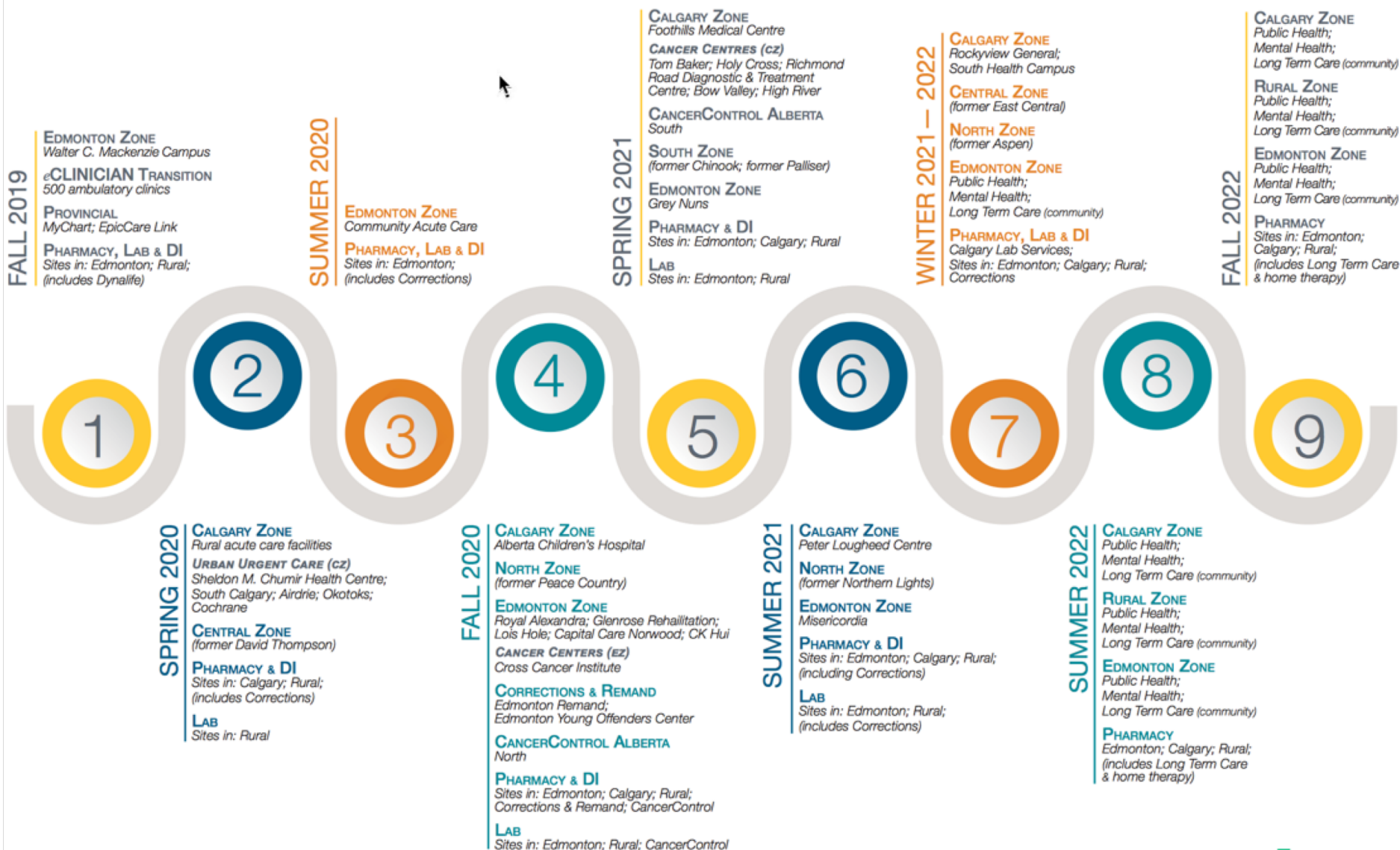
Pharmacy

- AHS integrated pharmacy information system

Bridges

- Patient Bridge, Provider Bridge
-

Connect Care: Implementation Timeline



Staying Informed:

- Website connect-care.ca
 - Resources ahs-cis.ca/mdresources
 - Blog bytes.connect-care.ca
 - Vlog vlog.connect-care.ca
-

Better Health. Powered by Information.

Connect Care Vlog

When does Connect Care Happen?

Rob Hayward, CMIO, Alberta Health Services

November 20, 2018

