

Connect Care VLOG

What are “Connect Care”, “CIS” and “Epic”?

Rob Hayward, CMIO, Alberta Health Services

February 7, 2018



What are Connect Care, CIS & Epic?

Connect Care ← Initiative

Clinical Information System ← Technology

Epic Systems ← Core dataset & codeset

Vision:

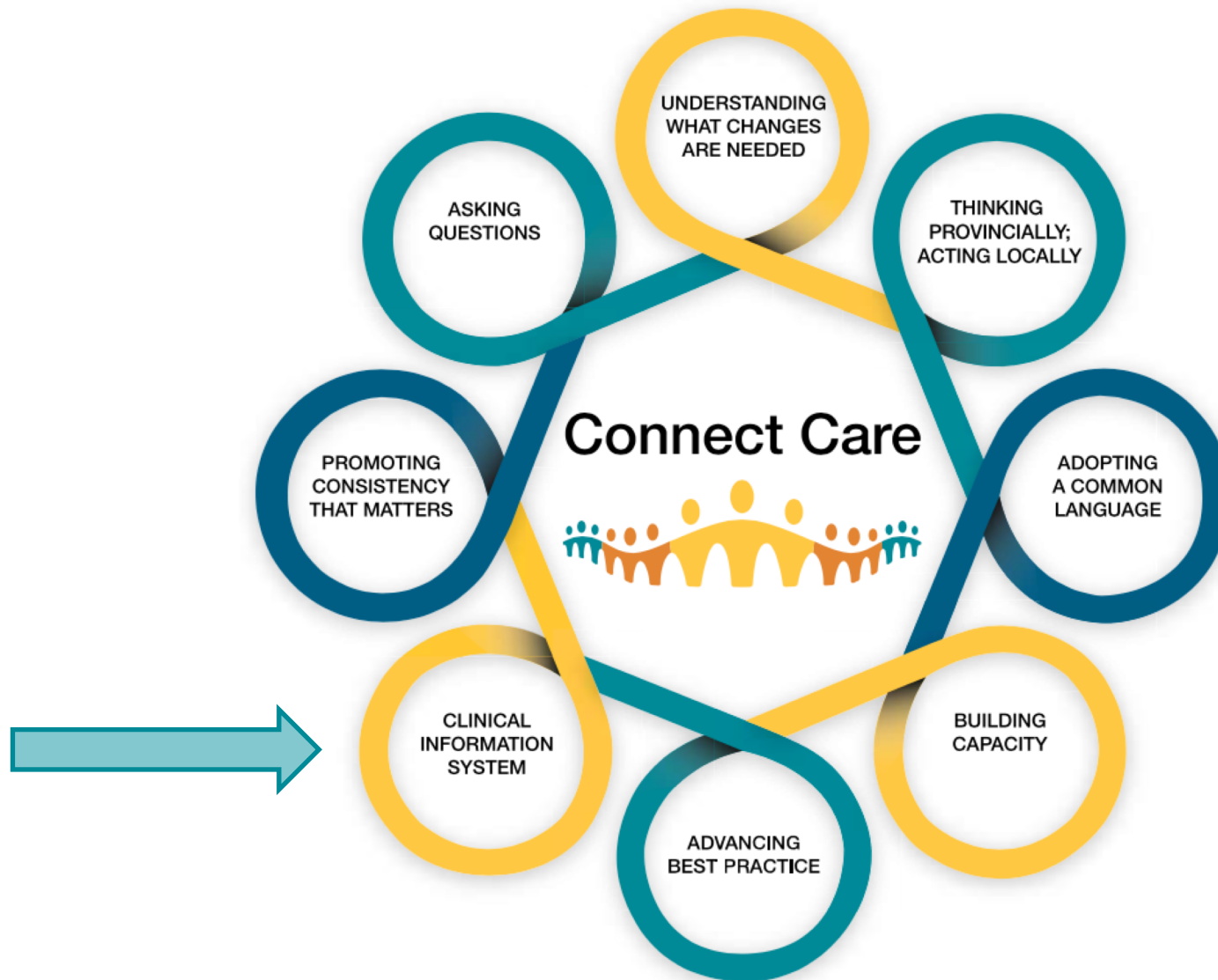
Better Health, Powered By Information

Mission:

To deliver best care and improve health outcomes for and with Albertans through an accessible, integrated, comprehensive and standardized clinical information system.



Connect Care >> Clinical Information System



AHS Provincial CIS

Integrated information management platform supporting the collection, access, use and sharing of information supporting the delivery of health services to persons and populations in multiple settings across the continuum of care.

Electronic Health Record (EHR)

Client-centred, longitudinal collection of personal health data supporting multiple providers across the continuum of care with appropriate information securely delivered to authorized individuals...

[patient-centric]

Electronic Medical Record (EMR)

Record of clinical services and related data maintained by a caregiver in an electronic system for reference and updating by the caregiver.

[provider-centric]

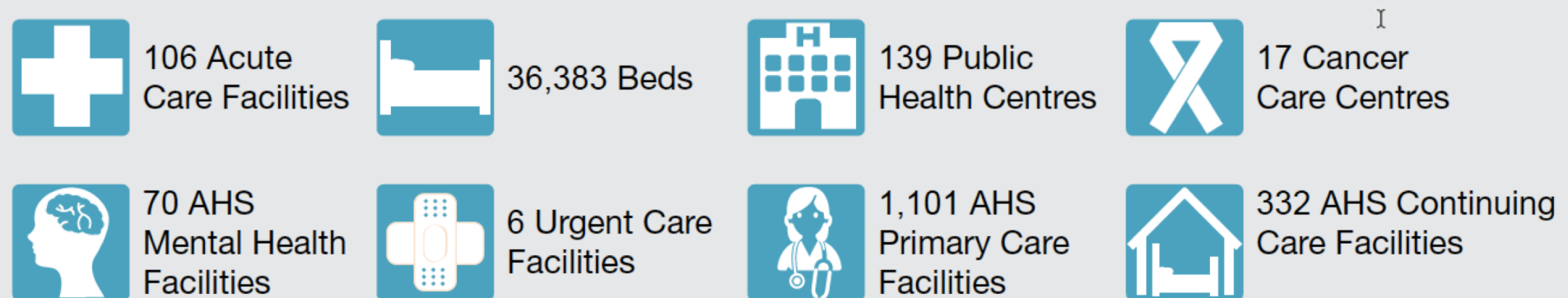
Clinical Information System (CIS)

... additionally, documentation, collection, storage and integration of information supporting the delivery of interventions (e.g. image repository), services (e.g. admission-discharge-transfer) and programs (e.g. risk surveillance) to patients & populations.

[institution-centric]

Scope

The impact of the AHS Provincial CIS will be felt everywhere that AHS operates, serves and collaborates.



Reach

POPULATION

86,900	AHS
8,800	Covenant
8,000	Physicians
10,000	Students
2,100	Carewest / Capital Care / CLS

BEDS

8,940	Total Hospital Acute and Sub-Acute Care
25,323	Total Continuing Care
2,659	Total Addiction and Mental Health

FACILITIES

Community Ambulatory Care

6	Urgent Care Centres
7	Ambulatory Care Centres
3	Family Care Clinics
139	Public Health Centres

Addiction and Mental Health

39	Addiction
26	Community Mental Health
5	Standalone Psychiatric

Acute Care

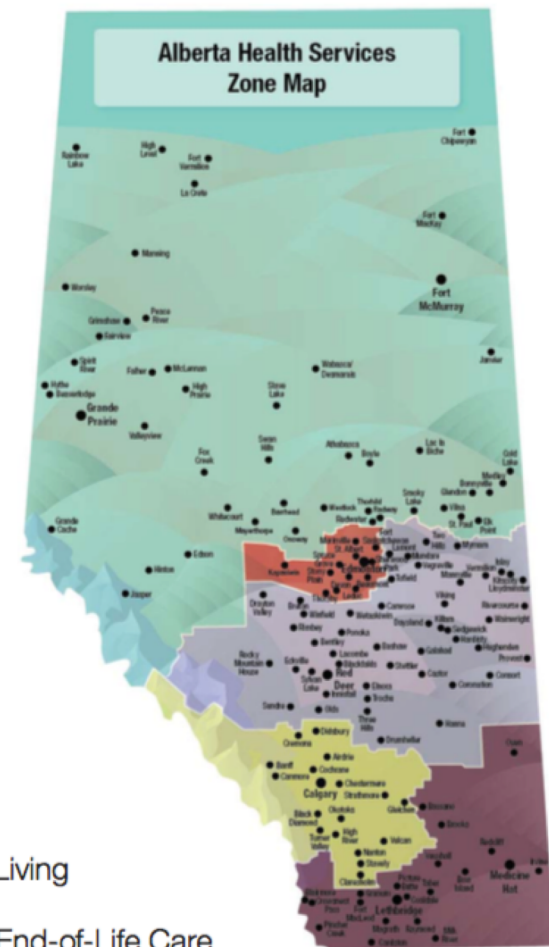
106	Total Designated Hospitals
-----	----------------------------

Cancer Care

17	Cancer Centres
----	----------------

Community-Based Care

331	Long-Term Care and Supportive Living
108	Additional Contracted Care Sites
20	Community Hospice, Palliative & End-of-Life Care



Functions

The CIS will improve upon the functionality we have today, plus what has been missing

- Order management
- Results management
- Clinical assessment & documentation
- Clinical decision support
- Health information management
- Research management
- Medication management
- Personal health
- Embedded inquiry & analytics
- Population health management
- Clinical operations support
- Corporate administration
- Virtual Health Services

Connect Care >> Clinical Information System

Specialty Domain Teams

222 evaluators

Practice & Patient Management
Acute Care
Addiction & Mental Health
Financial Management (Finance)
Primary Care
Ambulatory Care
Self & Family Care
Research, Reporting & Analytics
Information Technology
Cancer Care
Critical Care
Population Public Health & Infection Control
Emergency Care
Laboratory
Surgery
Pediatrics
Pharmacy
Cardiac Sciences
Women's Health
Radiology
Continuing Care
Delivery Site Management
Anesthesia
Contracting, Procurement & Supply Management

Other Evaluation Teams

62 evaluators

Information Security and Privacy
IT Q&A
Finance Pricing
Implementation, Training, Operations

284 Professionals

50 Physicians
57 Nurses (RN, RPN, NP, LPN)
24 Allied Health
15 Clinical Support
4 Communicable Disease, Infection Control, Public Health
19 Front Line Management
2 Clinical Informatics
6 Patient Advisors
4 HIM
4 Analytics
37 Senior Leaders
8 CPSM Management
6 Info Security / Privacy
26 Finance Management
18 IT Application, Technology & Architecture
4 Other (Midwife, Consultant, Faculty Liaison, Operations)



63 Edmonton

56 Calgary

53 Rural

112 Provincial

CIS Experience

127 users

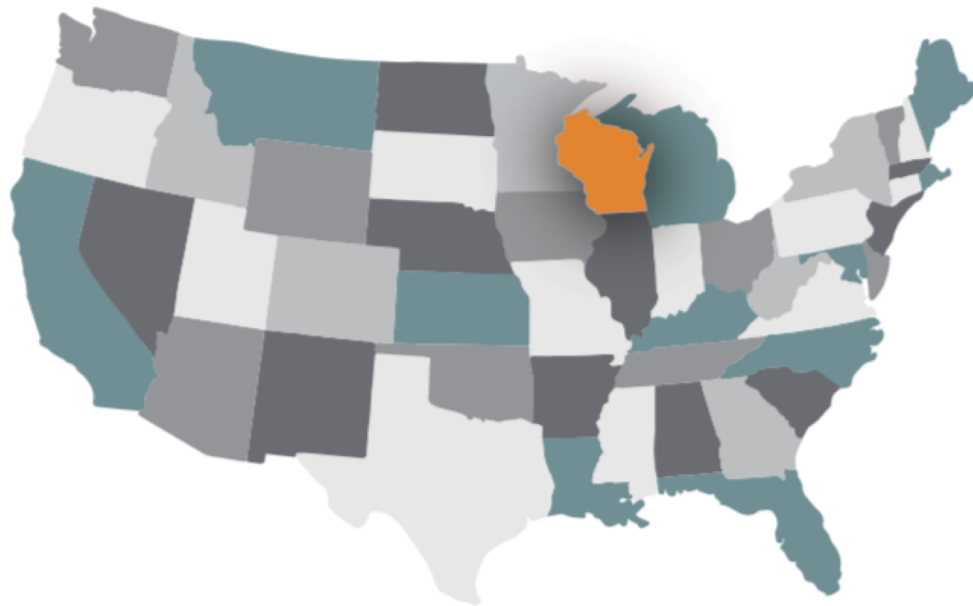
34 Epic

63 Meditech

41 Allscripts

Epic Systems - large health systems leader

Epic the COMPANY



Located in the beautiful countryside of Verona, Wisconsin, about 11 miles south of Madison, the state capital.

Epic the COMMUNITY

Includes 405 highly respected health care organizations that cover:

- 41,200 clinics
- 1,950 hospitals
- 1,700 retail clinics
- over 336,000 physicians



When the current software roll-outs are complete, Epic will help support care for 196 million people.

Epic *with the patient at the heart*

Epic develops software to help people get well, help people stay well and help future generations be healthier.

Epic Community

International

- Australia, Canada, Denmark, Finland, Lebanon, Netherlands, Saudi Arabia, Singapore, UAE, United Kingdom



A small selection of organizations in the Epic community that have selected us for large regional/multi-regional deployments or that operate major cancer centers includes:



Modules



Core Inpatient (incl. ER, OR, CC) & Ambulatory



Mobile



Personal & Provider Portals



Behavioral Health *



Cardiology (Cupid)



Dental (Wisdom)



Gastroenterology *



Genomics *



Home Health & Hospice



Infertility *



Long-term Care



Nephrology



Obstetrics (Stork)



Medical Oncology (Beacon)



Ophthalmology (Kaleidoscope)



Ortho (Bones)



Radiology (Radiant)



Rehab



Transplant (Phoenix)



Wound Care

Epic Contract Principles

All modules in scope

- All specialties, all supports (Lab, DI, Pharmacy, Scheduling, Billing, etc.)

Enterprise provincial licensing

Canadian foundation build, Alberta configuration

- Migrate legacy CIS data and important ongoing data feeds

Leverage vendor success & experience

- Attend to community learnings and Good Install Program
-

Staying Informed:

- Website connect-care.ca
- Resources ahs-cis.ca/mdresources
- Blog bytes.connect-care.ca
- Vlog vlog.connect-care.ca

Connect Care VLOG

What are “Connect Care”, “CIS” and “Epic”?

Rob Hayward, CMIO, Alberta Health Services

February 7, 2018

